

RANGE OF ACCESSORIES

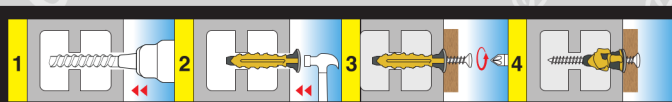


PERFORMANCE AND INSTALLATIONS

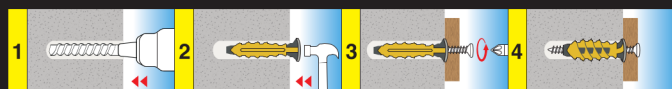
LOADS EXPRESSED IN DAN

	Ø	TRACTION	SHEAR	MULTIDIRECTIONAL SHEAR
CLS	6	180,00	169,26	168,08
	8	190,00	366,00	187,54
HORIZONTAL HOLLOW BRICK	6	31,26	68,92	18,70
	8	35,32	115,10	19,40
HOLLOW BRICK	6	35,36	91,64	39,10
	8	108,80	228,00	104,40
SOLID BRICK	6	78,00	96,14	58,50
	8	86,00	153,94	74,70
TUFF	6	44,00	84,64	34,40
	8	73,00	158,80	77,40
DRYWALL	6	19,00	39,90	18,30
	8	37,00	83,20	25,90
GASBETON	6	19,00	48,24	11,20
	8	44,04	113,12	31,58
CALCIUM SILICATE BRICK	6	46,60	77,30	31,30
	8	59,80	146,60	60,60

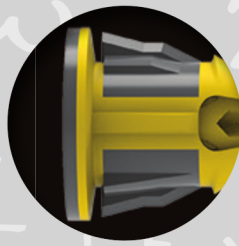
The declared laboratory values must be verified by construction site technicians.



Installation procedure on hollow material



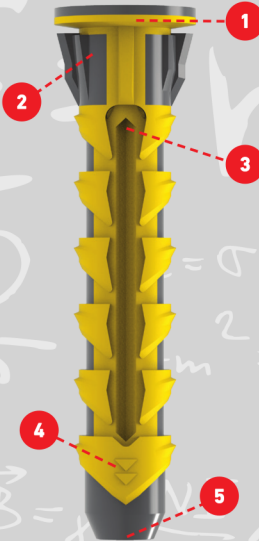
Installation procedure on solid material



1) DOUBLE BI-COMPONENT EDGE WITH INCREASED DIAMETER WITH ANTI-ROTATION FUNCTION ON THE SUPPORT MATERIAL



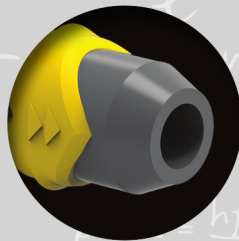
2) PRISMATIC FINN SYSTEM UNDER THE EDGE WITH ANTI-ROTATION, LOCKING AND CENTERING FUNCTIONS



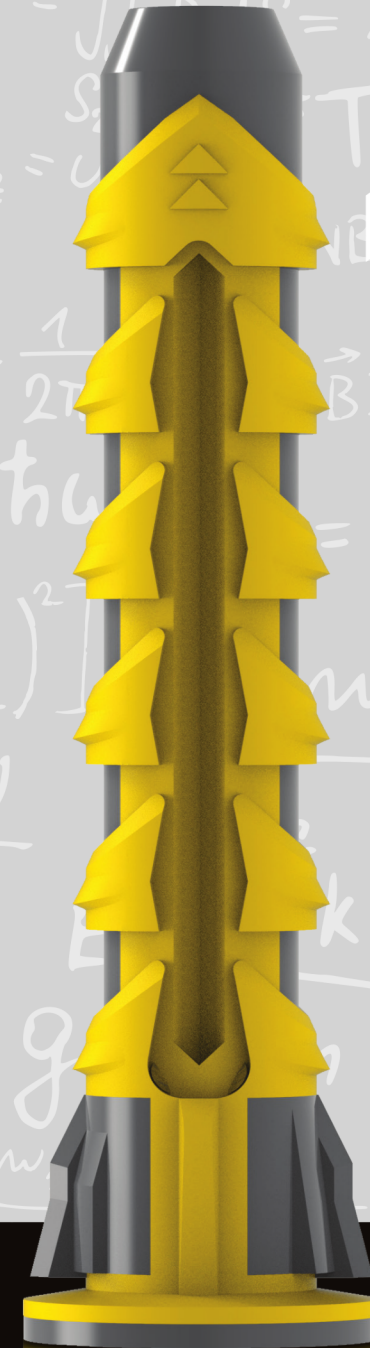
3) LONGITUDINAL TECHNICAL MEMBRANE WITH ANTI-WAVING AND ANTI-DUST FUNCTION OF THE SCREW



4) TRANSVERSAL BANDS SURMOUNTED BY SOFT TOUCH PARABOLIC BOSSES, FAVOR ANCHORING IN COMPACT AND FRIABLE SOLID MATERIALS, GENERATING A CIRCULAR KNOTTING



5) TRUNCATED CONICAL TERMINAL WHICH FACILITATES THE INSERTION OF THE ANCHOR INTO THE SUPPORT MATERIAL



NOBEX

KEEP FIXING YOUR FUTURE



NOBEX S.r.l.

Headquarter: Via Monviso, 9 - 10090 Villarbasse (TO) Italy

Plant: Via Monviso, 5 - 27010 Sizzano (PV) Italy

Tel. +39 (0)382 1950710 - info@nobex.it

www.nobex.it

I.P.



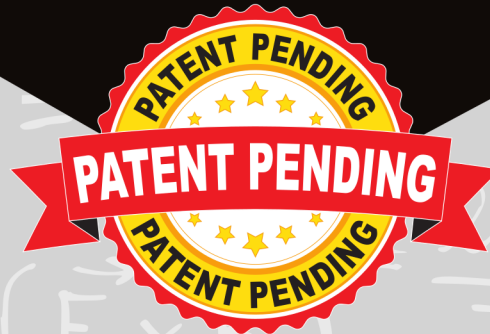
PRODUCTION
ENERGY
SAVING



ANTI-VIBRATION



SOFT TOUCH



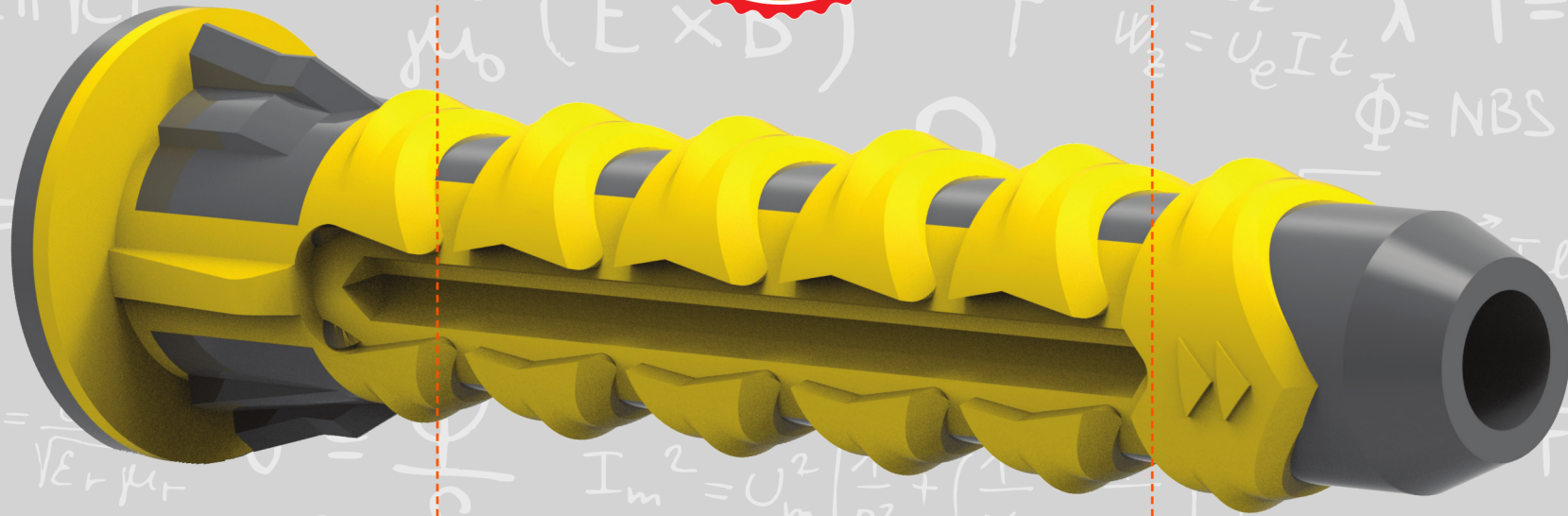
LOWER CO₂
EMISSIONS



MULTI-MATERIAL



NON-SLIP SURFACE



WATERPROOF



SEISMIC TEST



FUNCTIONAL
ANTHROPOMORPHIC
DESIGN



100%
RECYCLABLE



THERMOCHEMICAL
BOND



HIGH
PERFORMANCE

